



10-45 GHz

## Millimeter Wave 2- and 4-Way Power Dividers

- 40 GHz, 2.92 mm Coaxial Connector Power Divider
- Ultra Broadband, Multi-Octave
- Superior Phase & Amplitude Balance

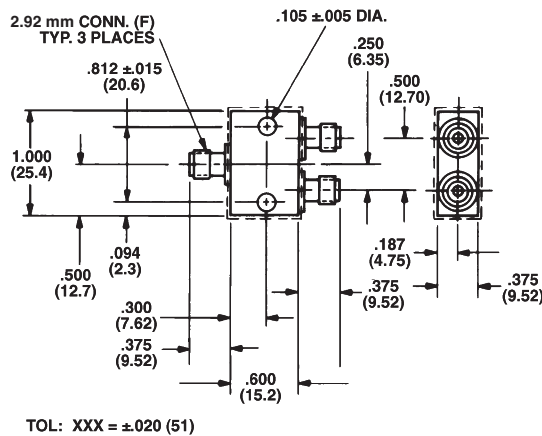
### Specifications

2.92 mm (F), 2-Way / 4-Way, 10 to 45 GHz

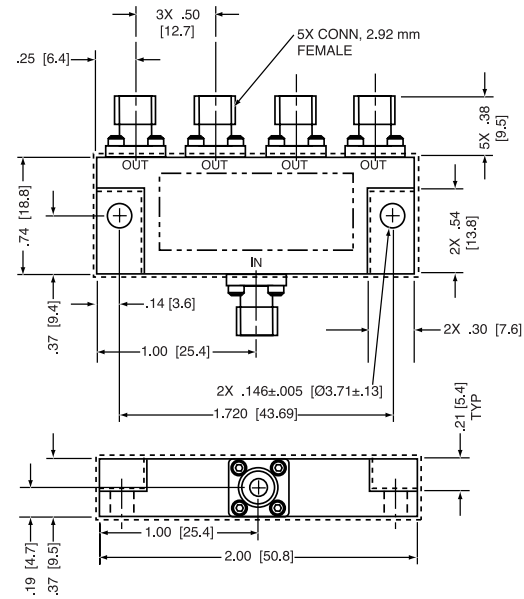
FREQUENCY RANGE (GHz)	MODEL	BAND SEGMENTS (GHz)	VSWR (max.)		INSERTION LOSS (dB min.)	ISOLATION (dB)	AMPLITUDE BALANCE (dB max.)	PHASE BALANCE (max.)	AVERAGE POWER* (W max.)			WEIGHT (max.)	
			INPUT	OUTPUT					A	B	C	oz.	gr.
10-45	4428C-2	10-18	1.5	1.5	0.6	20	0.3	5°					
		18-26.5	1.7	1.7	0.9	17	0.5	6°	20	5	1	0.71	20
		26.5-40	1.9	1.9	1.6	14	0.8	12°					
18-40	4318-4	18-40	1.9	1.7	2.2	16	1.0	10°	30	5	0.5	1.41	40

\* Average Power Rating into a load VSWR of (A) 1.2 to 1, (B) 2 to 1 and (C) ∞VSWR

### Outline Drawings



MODEL 4428C-2



MODEL 4318-4

Allow .020 for sealant build-up per surface.  
Dimensions in inches (mm in parentheses), unless otherwise specified.