

FEATURES

- Screened for Space Flight
- Low Power Consumption
- RF Ports Matched to 50 Ohms
- Hermetically Sealed Kovar Package
- Radiation Tolerance: 200 krad
- Unconditional Stability
- Space Heritage Materials and Processes

TYPICAL APPLICATIONS

- GPS Band, Commercial Space

ELECTRICAL SPECIFICATIONS (@ 23°C)

Parameter	Min	Max	Typ	Units
Frequency Range	1.15	1.65	-	GHz
Noise Figure	-	0.7	-	dB
Gain (S21) (Gain options: 30, 40 or 50 dB)	XX	-	-	dB
Gain Flatness	-	0.5	-	± dB
Output Power @ 1dB Compression Point (P1dB)	5	-	-	dBm
Input VSWR (S11)	-	1.5:1	-	-
Output VSWR (S22)	-	1.5:1	-	-
DC Supply Voltage	-	5*	-	VDC
DC Supply Current	-	50	-	mA
Standard Hardware Options	-BT = Bias through Output -RH = Internal Rad Hard Regulator. Operating Voltage: +8 to +18V			
Connector Options	-MF = SMA Male / SMA Female -FM = SMA Female / SMA Male -MM = SMA Male / SMA Male			
**Screening Options	-EM = Engineering Model (No Screening) -H = MIL-PRF-38534, Table C-IX, Class H -K = MIL-PRF-38534, Table C-IX, Class K -N2 = NASA EEE-INST-002, M2, Table 2, Level 2, Non-QML -N1 = NASA EEE-INST-002, M2, Table 2, Level 1, Non-QML			

*Standard model does not include internal voltage regulator. Must maintain ±2% Voltage and 10 mV Max Ripple

**Screening options do not include Element Evaluation, Group B nor Group C Testing. Consult factory to add these requirements. Engineering Models are built using same materials and processes but are not screened. Not recommended for flight.

Included Standard Screening (Meet requirements of NASA EEE-INST-002 Level 3)

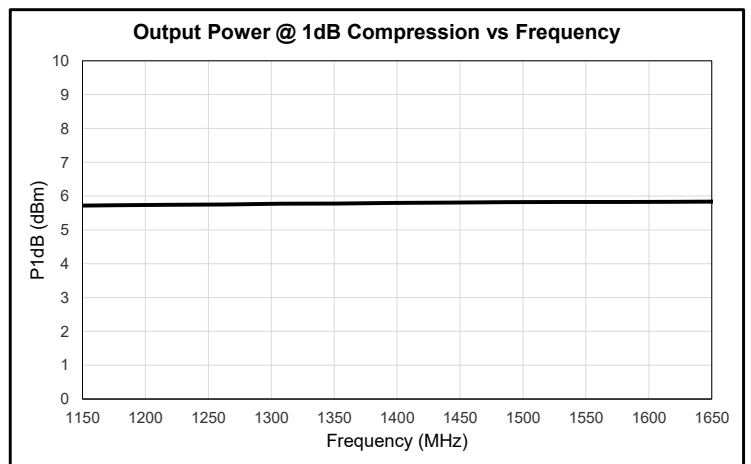
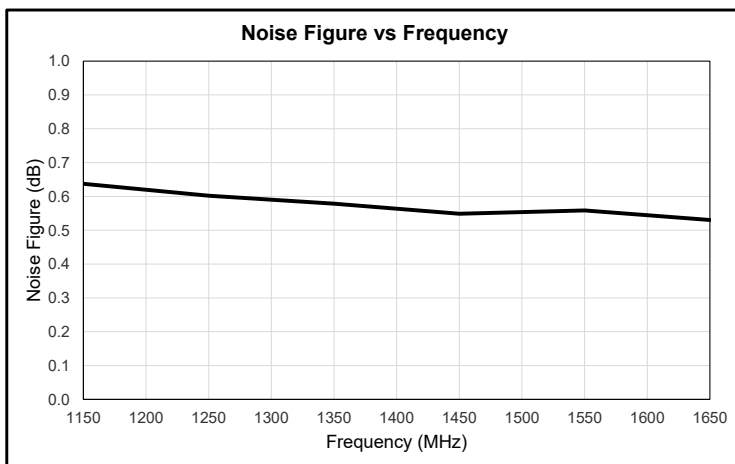
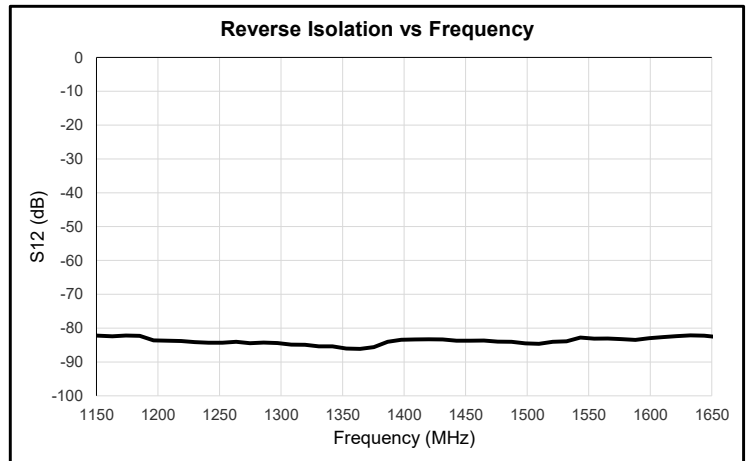
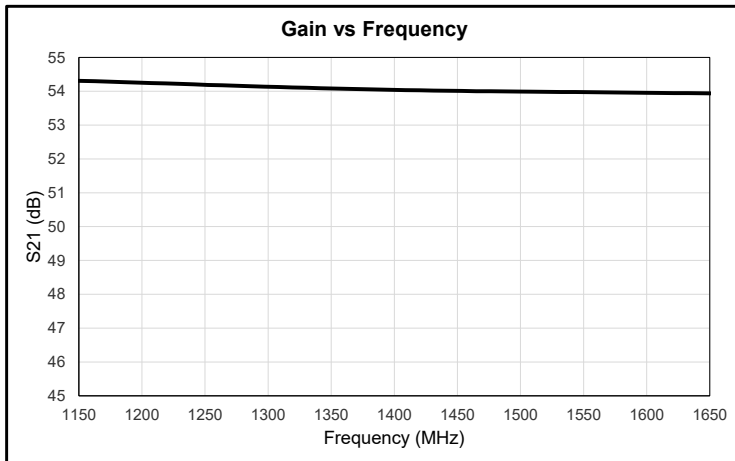
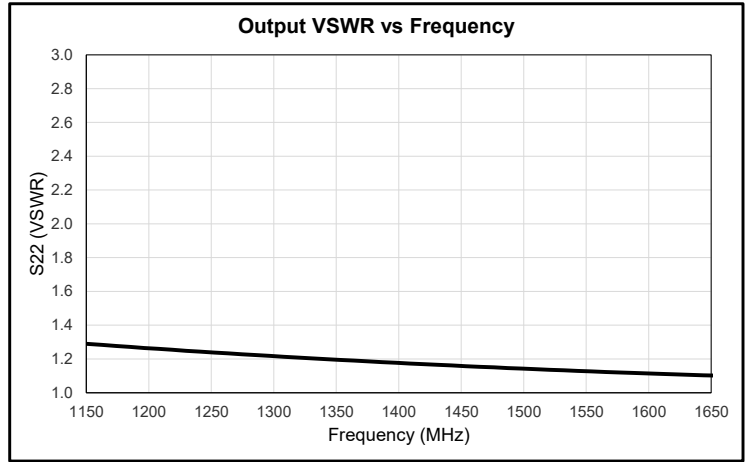
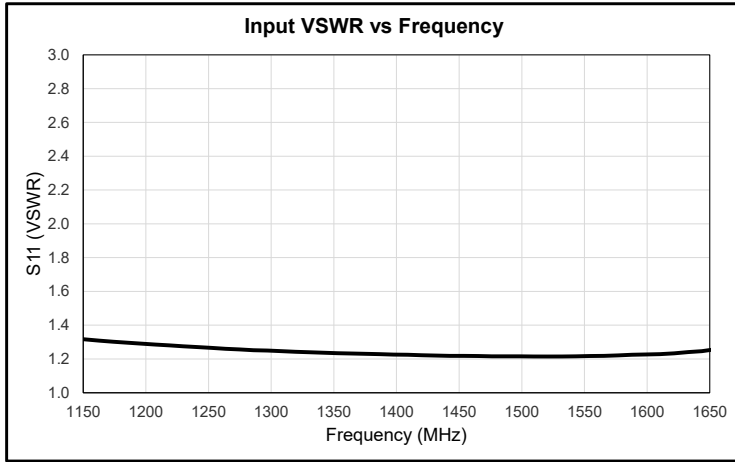
Parameter	MIL-STD-883 Method
Hermetic Seal	-
Temperature Cycling	1010, Condition C, 10 Cycles
Mechanical Shock	2002, Condition B (Y1 only)
PIND	2020, Condition B
Fine and Gross Leak Test	1014
Burn-in	1015, 160 hours at 125 °C minimum

The information above is relative to the sale of a COTS product as depicted. For information regarding other amplifier features not listed for this specific LNA model, please review our product overview brochure at the following link or contact your local representative.

The material presented in this datasheet was current at the time of publication. Narda-MITEQ's continuing product improvement program makes it necessary to reserve the right to change our mechanical and electrical specifications without notice. If either of these parameters is critical, please contact the factory to verify that the information is current.

This material consists of Narda-MITEQ general capabilities information and does not contain controlled technical data as defined within the International Traffic in Arms (ITAR) Part 120.10 or Export Administration Regulations (EAR) Part 734.7-11. D-405/05.01.18.

Typical Performance @ 23°C, 50dB Gain version



S2P file may be available upon request

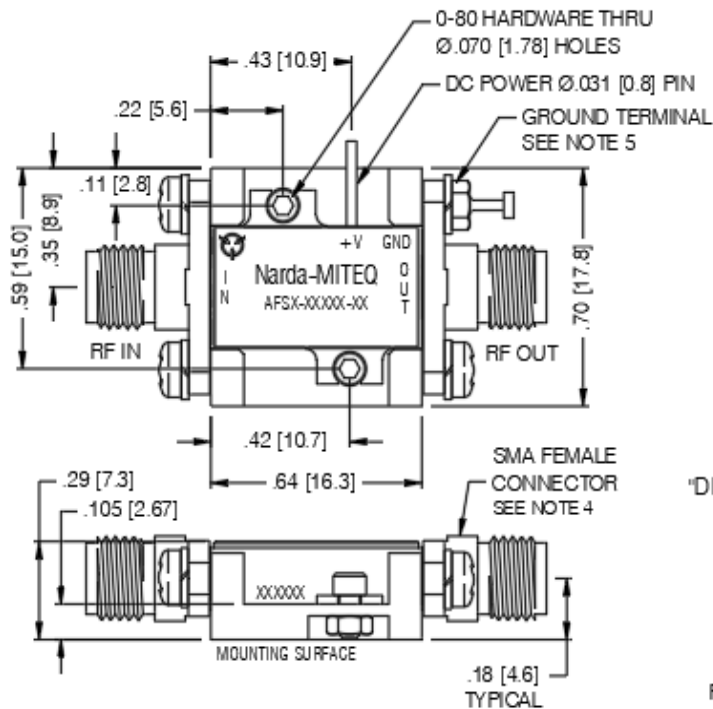
Absolute Maximum Ratings

Parameter	Rating
DC Supply Voltage	+5 V*, +22V with regulator
RF Input Power	+13 dBm
Operating Temperature	-55°C to +85°C
Non-Operating Temperature	-65°C to +150°C
RF Port Coupling (In/Out)	AC Coupled / AC Coupled

Outline (Reference Drawing 113384-4)

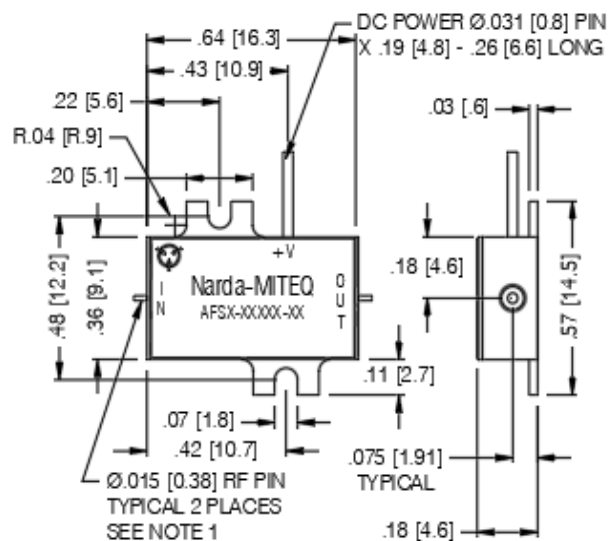
OPTION 1

AMPLIFIER MAY BE READILY USED AS IS, BY REMOVING EXISTING 0-80 HARDWARE AND SUBSTITUTING WITH LONGER 0-80 SCREWS FOR CUSTOMER MOUNTING



OPTION 2

"DROP-IN" AMPLIFIER BY REMOVING "SMA" CONNECTORS AND MOUNTING HARDWARE AS SHOWN



Mechanical Specifications

Parameter	Value
Length	0.64 in [16.3 mm]
Width	0.70 in [17.8 mm]
Height	0.29 in [7.3 mm]
Connectors (In/Out)	SMA(F) / SMA(F)
Approx. Weight	10.8 g