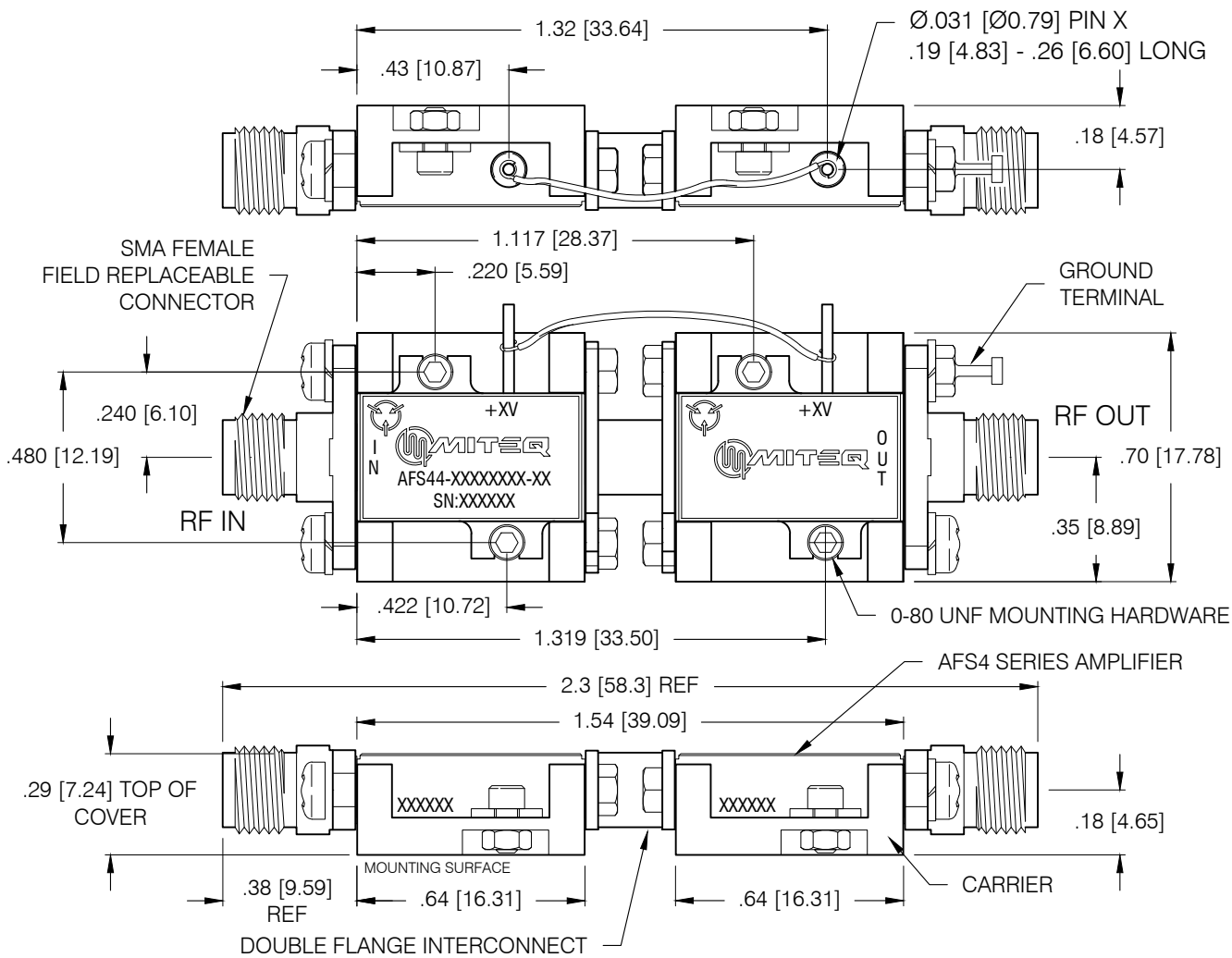


DASH NO.	APPLICATION		REVISIONS			
	NEXT ASSY	USED ON	LTR	DESCRIPTION	DATE	APPROVED
			G	Incorporate ECN 52696	06/11/21	rs
PRINT NOT ON AUTOMATIC DISTRIBUTION VERIFY REVISION PRIOR TO USE						



NOTES:

1. DIMENSIONS IN BRACKET ARE METRIC EQUIVALENTS.
2. DC PINS MAY BE PRE WIRED DEPENDING UPON CUSTOMER PREFERENCES.
3. MARKING MAY VARY AS PER CUSTOMER SPECIFICATIONS.
4. EXISTING 0-80 MOUNTING HARDWARE CAN BE REPLACED WITH LONGER SCREWS FOR MOUNTING.

THESE ITEM(S)/TECHNOLOGY CONTAIN INFORMATION SUBJECT TO U.S. GOVERNMENT EXPORT CONTROL IN ACCORDANCE WITH THE EXPORT ADMINISTRATION REGULATIONS (EAR), 15 CFR PARTS 730-744. EXPORT OF THIS DATA TO ANY FOREIGN COUNTRY OR DISCLOSURE OF THIS DATA TO ANY NON-US PERSON MAY BE A VIOLATION OF FEDERAL LAW.

Narda-MITEQ PROPRIETARY

THIS DOCUMENT CONTAINS INFORMATION WHICH IS PROPRIETARY TO Narda-MITEQ. THE CONTENTS SHALL NOT BE DISCLOSED, COPIED, DISTRIBUTED, OR USED UNLESS AUTHORIZED BY AN OFFICER OF Narda-MITEQ.

UNLESS OTHERWISE SPECIFIED DIMENSIONS ARE IN INCHES TOLERANCES ON	NAME	DATE
DECIMAL .X ±0.1 [2.5] DECIMAL .XX ±0.01 [0.25] DECIMAL .XXX ±0.005 [0.13] ANGLES X° ±30'	DWN <i>BTaraseiskey</i>	01/02/90
PROJECTION	DFT DES <i>rs</i>	06/11/21
	PROJ ENGR <i>Joseph Buonaiuto</i>	06/14/21
	MFG ENGR	
	Q.C. <i>R. Zalewski</i>	06/14/21
	CUST	



435 MORELAND RD HAUPPAUGE, NY 11788

**CASCADING AMPLIFIER
AFS44
OUTLINE**

SIZE A	CODE IDENT. NO. 99899	115640	REV G
SCALE	PROJECT 60D000	SHEET 1 OF 1	