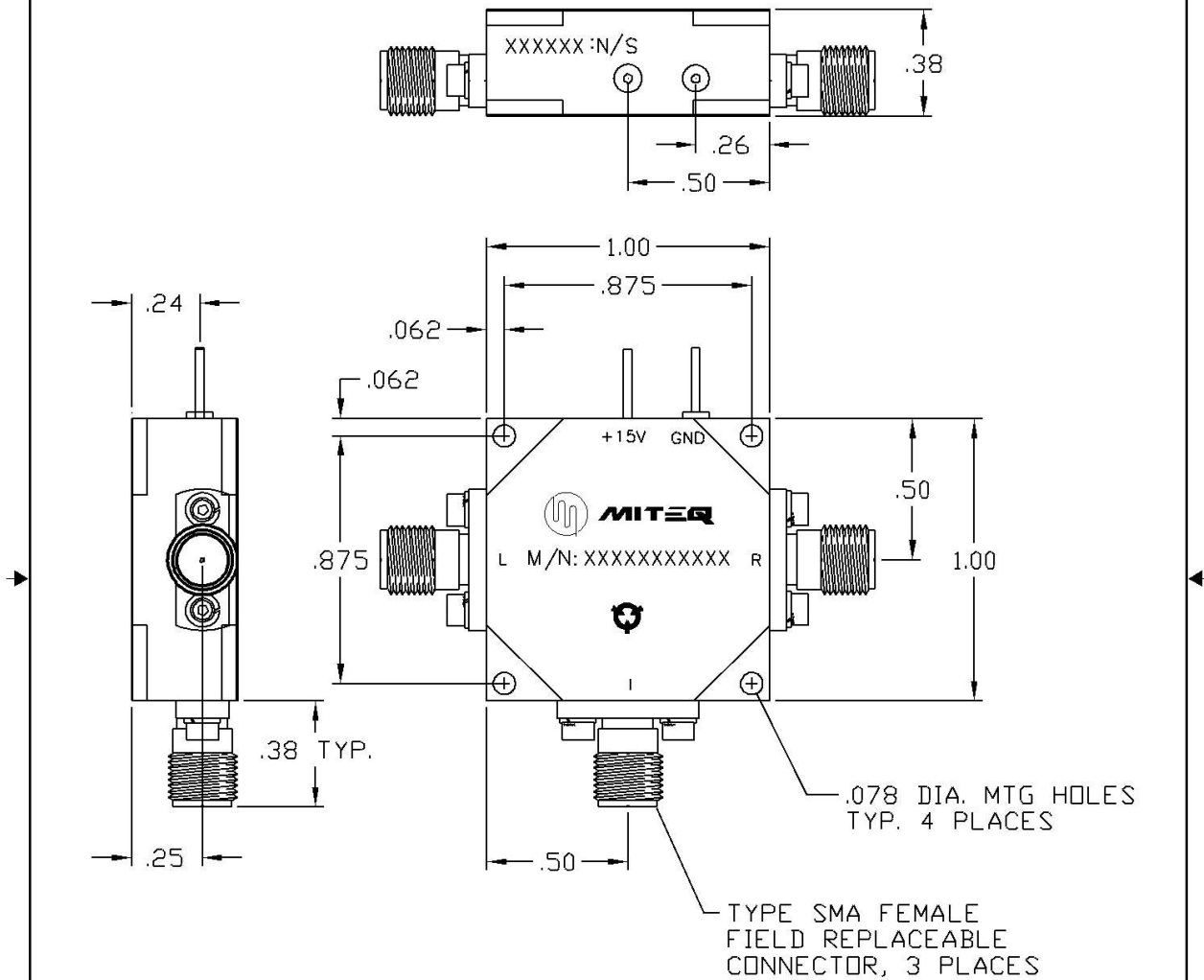


DASH NO.	APPLICATION		REVISIONS			
	NEXT ASSY	USED ON	LTR	DESCRIPTION	DATE	APPROVED
			E	ASQL, SCALE 1:1, CORRECT DIMS	11/17/2005	L. Cardinal



FINISH: NICKEL

ALL PAGES ARE OF ORIGINAL ISSUE (A) EXCEPT AS NOTED.	CONTR NO. MQ0143552		 100 Davids Drive, Hauppauge, New York 11788		
	PREP BY: D. LoCICERO	DATE: 9/26/1991			
UNLESS OTHERWISE SPECIFIED, DIMENSIONS ARE IN INCHES (MM). TOLERANCES ON DECIMAL ANGLES .XX±.01 .XXX±.005 ±0.30	CHKD BY: L. Cardinal	DATE: 11/17/2005	OUTLINE DRAWING MIXER PREAMPLIFIER R5 PKG		
	PROJ ENGR: S. Spohrer	DATE: 11/18/2005			
	APPROVAL (PROJ)		SIZE: A	CODE IDENT. NO.: 33592	118225
	APPROVAL (GOVT)		SCALE:	REV.: E	SHEET 1 OF 1