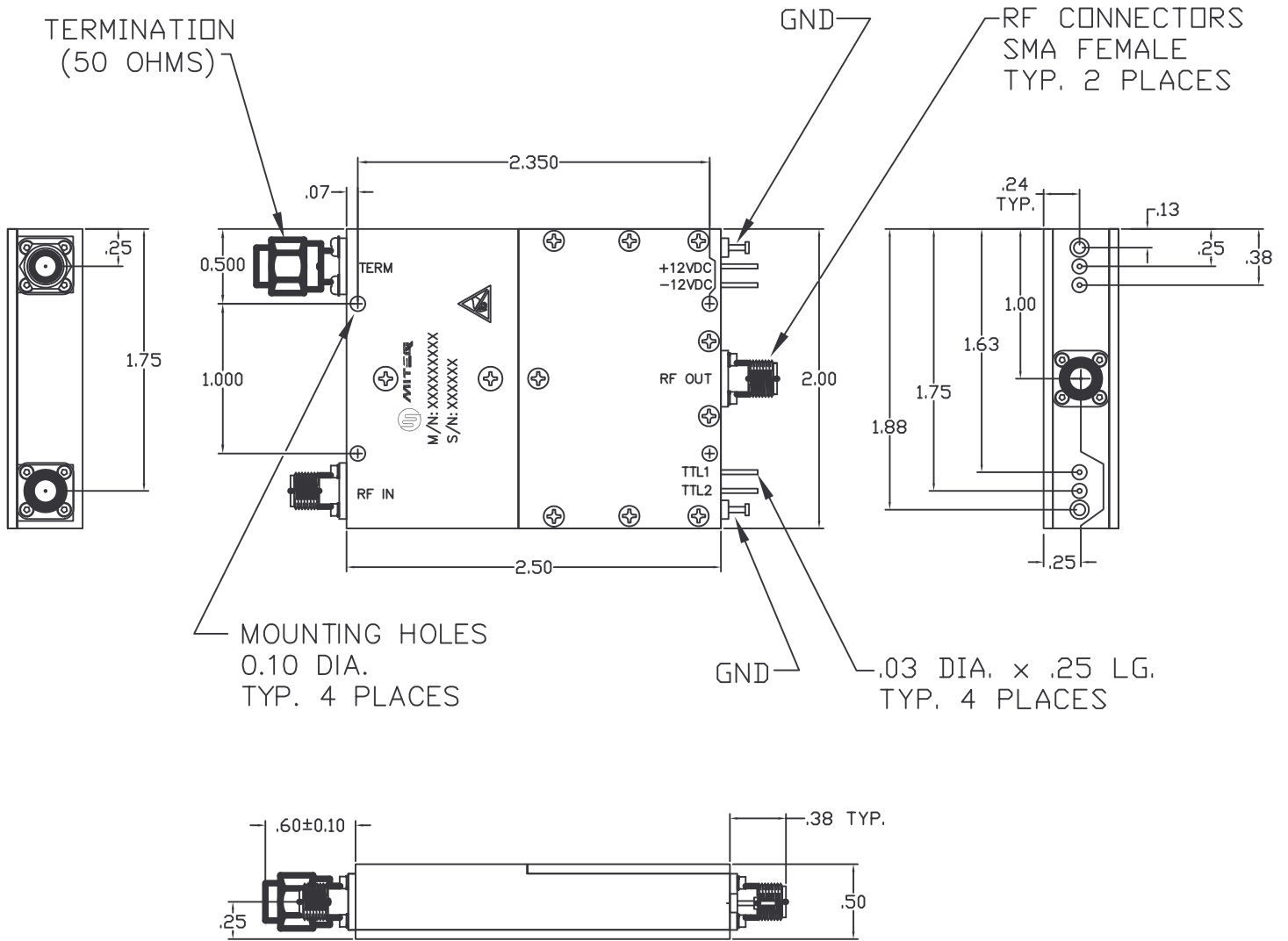



DASH NO.	APPLICATION		REVISIONS			
	NEXT ASSY	USED ON	LTR	DESCRIPTION	DATE	APPROVED
			B	RevPer ECN 15985, Add GND	04/26/10	L. Cardinal



FINISH: NICKEL PLATE per SAE-AMS-C26074C

ALL PAGES ARE OF ORIGINAL ISSUE (A) EXCEPT AS NOTED.	CONTR NO.		 100 Davids Drive, Hauppauge, New York 11788
	ORIGINALLY DRAWN BY	<i>S. Spohrer</i>	
UNLESS OTHERWISE SPECIFIED DIMENSIONS ARE IN INCHES (MM) TOLERANCES ON DECIMAL ANGLES .XX±.030 XXX±.010 ±0°30'	PREP BY	<i>L. Cardinal</i>	DATE
	CHKD BY	<i>L. Cardinal</i>	04/26/10
	PROJ ENGR	<i>F. Cannata</i>	07/14/10
APPROVAL (PROJ)		SIZE	CODE IDENT. NO.
APPROVAL (GOVT)		A	33592
		SCALE	REV. B
			SHEET 1 OF 1