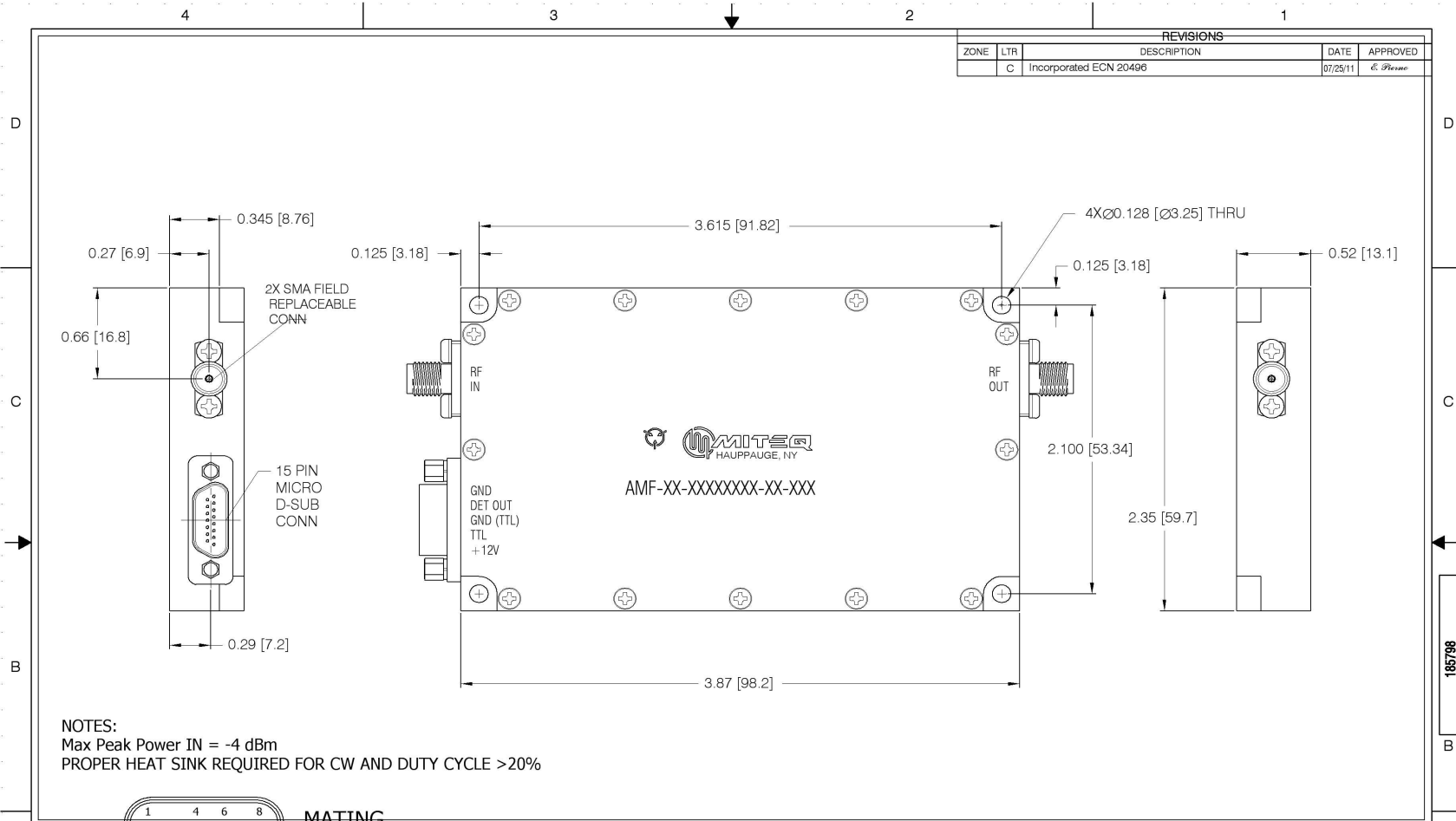


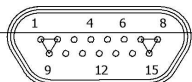
**Current Revision**

As of 11/4/2011 8:36:29 AM

DWALATA



**NOTES:**  
 Max Peak Power IN = -4 dBm  
 PROPER HEAT SINK REQUIRED FOR CW AND DUTY CYCLE >20%



**MATING CONNECTOR**

DESIGNATION	PIN NOS.
12V IN	1, 2 AND 9
GND	7, 8 AND 15
GND(TTL)	12
TTL	4
DET_OUT	6
ALARM_OUT	N/A
ANX_OUT	N/A

QTY REQ'D		NOMENCLATURE OR DESCRIPTION		SYM/NOTES		PART NO.		CODE IDENT.		ITEM NO.	
PARTS LIST											
UNLESS OTHERWISE SPECIFIED DIMENSIONS ARE IN INCHES TOLERANCES ON											
DECIMALS		ANGLES		ENR BY		NAME		DATE			
XX±.01		XXX±.005		±0°30'		M. Reard		12/03/08			
				DRAWING		E. Perno		11/03/11			
MATERIAL				APPROVED BY							
				M. Cera				11/03/11			
FINISH				GA							
NEXT ASSY		USED ON		SCALE		REF		45DP09C		SHEET 1 OF 1	



**OUTLINE**  
**X-BAND, 10 WATT**  
**PULSED PA**

SIZE	CODE IDENT. NO.	REV.
C	33592	C
	185798	