

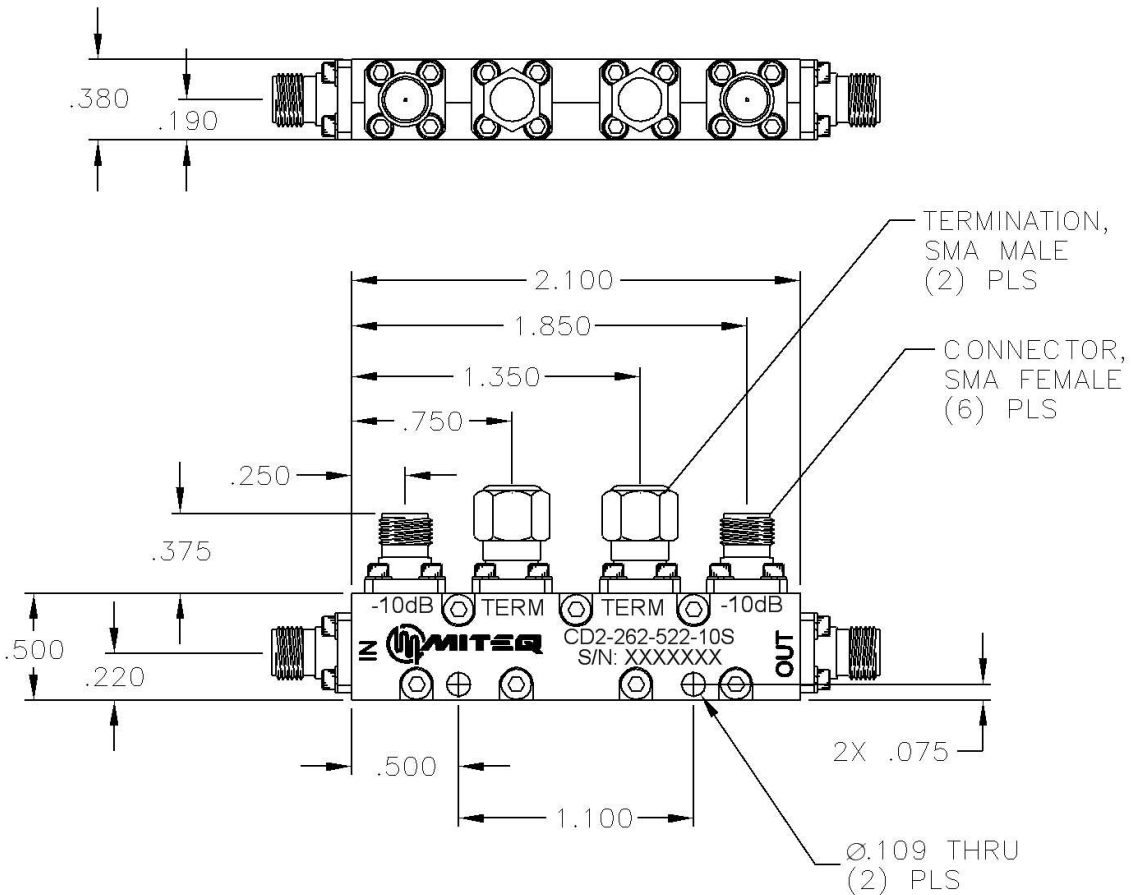
Current Revision

As of 11/23/2011 2:35:13 PM

DWALATA



| DASH NO. | APPLICATION | | REVISIONS | | | |
|----------|-------------|---------|-----------|------------------------|----------|-------------------|
| | NEXT ASSY | USED ON | LTR | DESCRIPTION | DATE | APPROVED |
| | | | B | Incorporated ECN 21162 | 10/05/11 | <i>J. Campisi</i> |



NOTES:

1. MATERIAL: ALUMINUM ALLOY 6061-T6
2. FINISH: TRIVALENT CHROMATE CONVERSION
IAW: MIL-DTL-5541, TYPE II, CLASS 3.

| | | | |
|---|----------------------------------|------------------|--|
| ALL PAGES ARE OF ORIGINAL ISSUE (A) EXCEPT AS NOTED. | CONTR NO. 38POD77 | | 100 Davids Drive, Hauppauge, New York 11788 |
| | PREP BY <i>J. Campisi</i> | DATE 04/14/09 | |
| UNLESS OTHERWISE SPECIFIED DIMENSIONS ARE IN INCHES TOLERANCES ON DECIMALS .01 ANGLES ±.005 ±0°30' | CHKD BY <i>J. Campisi</i> | DATE 11/08/11 | OUTLINE DRAWING BI-DIRECTIONAL COUPLER CD2-262-522-10S |
| | PROJ ENGR <i>W. Davidsson</i> | DATE 11/15/11 | |
| MFG ENGR | | SIZE A | CODE IDENT. NO. 33592 |
| Q.A. | | SCALE | REV. B |
| | | SHEET OF 1 | |