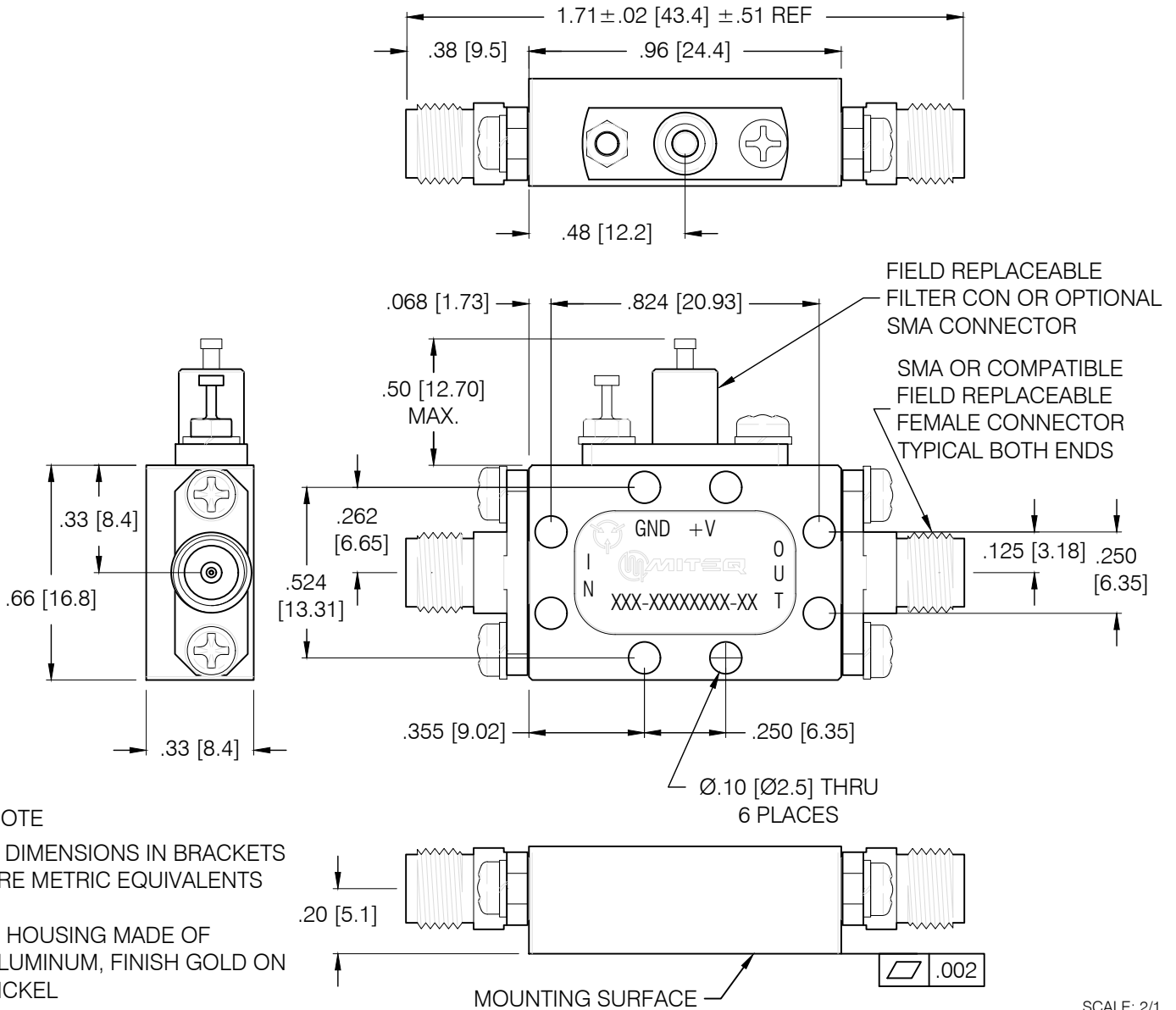


DASH NO.	APPLICATION		REVISIONS			
	NEXT ASSY	USED ON	LTR	DESCRIPTION	DATE	APPROVED
	HSG	213911	C	Incorporate ECN 36833	10/12/16	<i>scherer</i>

PRINT NOT ON AUTOMATIC DISTRIBUTION VERIFY REVISION PRIOR TO USE



NOTE

1. DIMENSIONS IN BRACKETS ARE METRIC EQUIVALENTS
2. HOUSING MADE OF ALUMINUM, FINISH GOLD ON NICKEL

Narda-MITEQ PROPRIETARY

THIS DOCUMENT CONTAINS INFORMATION WHICH IS PROPRIETARY TO Narda-MITEQ. THE CONTENTS SHALL NOT BE DISCLOSED, COPIED, DISTRIBUTED, OR USED UNLESS AUTHORIZED BY AN OFFICER OF Narda-MITEQ. UNLESS

THESE ITEM(S)/TECHNOLOGY CONTAIN INFORMATION SUBJECT TO U.S. GOVERNMENT EXPORT CONTROL IN ACCORDANCE WITH THE EXPORT ADMINISTRATION REGULATIONS (EAR), 15 CFR PARTS 730-744. EXPORT OF THIS DATA TO ANY FOREIGN COUNTRY OR DISCLOSURE OF THIS DATA TO ANY NON-US PERSON MAY BE A VIOLATION OF FEDERAL LAW.



435 MORELAND RD HAUPPAUGE, NY 11788

AWS SERIES ALUMINUM AMPLIFIER OUTLINE

UNLESS OTHERWISE SPECIFIED DIMENSIONS ARE IN INCHES TOLERANCES ON	NAME	DATE
DECIMAL .X ±0.1 [2.5] DECIMAL .XX ±0.01 [0.25] DECIMAL .XXX ±0.005 [0.13] ANGLES X° ±30'	DWN <i>J. Sepulveda</i>	09/11/15
	DFT DES <i>scherer</i>	10/12/16
	PROJ ENGR <i>J. Sepulveda</i>	10/12/16
PROJECTION	MFG ENGR	
	Q.C.	
	CUST	

SIZE A	CODE IDENT. NO. 99899	214464	REV C
SCALE	PROJECT	SHEET 1 OF 1	